



LESCOLTON
LIVE FOR YOUR BEAUTY AND HEALTH

PRESENTING NEW
TECHNOLOGIES IN

**BEAUTY &
HEALTH CARE**



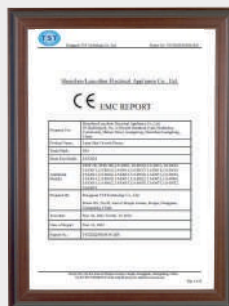
About Lescolton

Lescolton Electrical Appliance Co., Ltd. was established in 2012. It is a high-tech enterprise integrating R&D, production and sales, focusing on product technology R&D, manufacturing and international export trade.

The company has a large market in the world, with most of its sales in the Chinese and Vietnamese markets, as well as Europe and the United Kingdom.

Lescolton has a top research team with ten years of accumulated technological innovation and rich product development experience, and has obtained many domestic and foreign authoritative qualification certifications such as FDA, CFDA, 3C, CE, ROHS, and FCC.

CERTIFICATION





Technology strengthens thicker hair

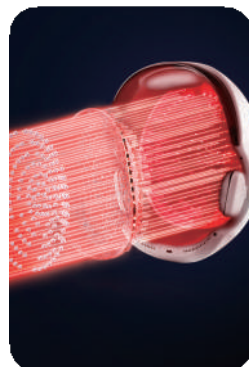
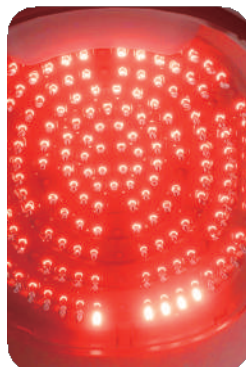
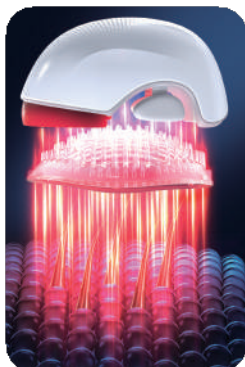
It delivers the same wavelength and dosage of energy proven to rejuvenate hair follicles, reduce hair loss, and effectively regrow hair without overheating.

Grow thicker, fuller, and healthier hair with the world's most advanced hair growth solution!

LS-D630

Laser hair growth device

- * 162 LLLT laser lights
- * LLLT laser technology, laser wavelength: $650\pm 10\text{nm}$
- * The Laser Hair Therapy Helmet uses medical-grade laser technology
- * Remote control and mobile power supply 2-in-1 design
- * FDA / CFDA / FCC / CE / ROHS





LS-D601

Laser hair growth device

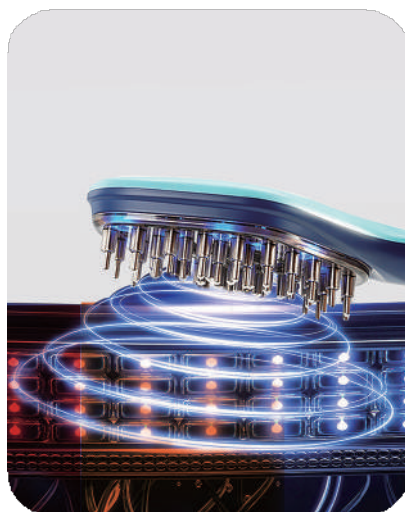
- * 26 LLLT laser lights + 30 LED lights
- * LLLT laser + red light dual technology, $650\pm 10\text{nm}$.
- * Intelligent operating system timing 25 min
- * Laser red light two light sources
- * FDA / FCC / CE / ROHS / SGS

LS-D620

Laser hair growth device

- * 80 LLLT laser lights
- * Remote control + mobile power supply
- * Intelligent operating system timed 20 min
- * 3600mAh lithium battery
- * CFDA / FDA / FCC / CE / ROHS / SGS

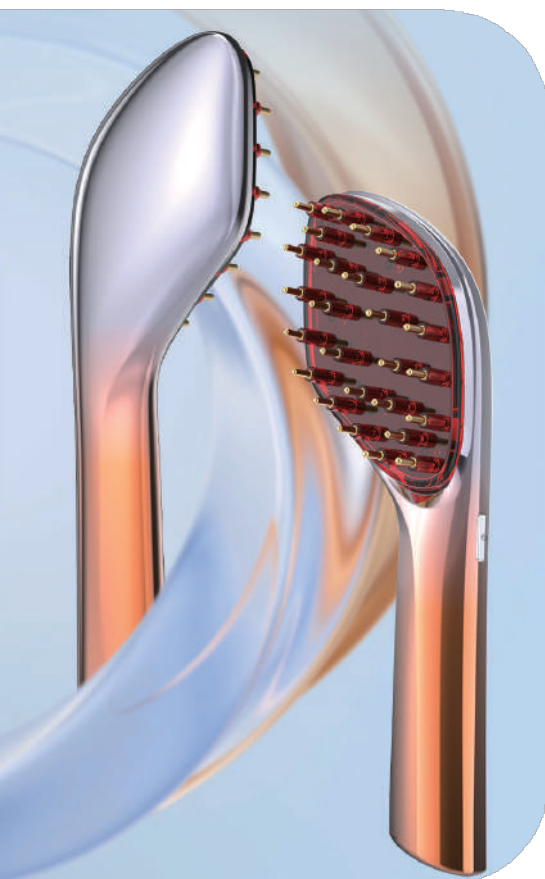




LS-D653

Hair massage comb

- * 22 red lights + 11 blue lights
- * 36 pin comb teeth
- * The product features a high - appearance - value design with a light - luxury texture
- * Press design, it precisely dispenses the liquid
- * The liquid is evenly squeezed out, avoiding waste and poor efficacy
- * The rolling of the ball promotes the blood circulation of the skin, facilitating the efficient absorption of the essence components and enabling them to deeply penetrate into the bottom layer of the skin and have full contact with skin cells
- * 3 levels EMS
- * ROHS FCC CE



LS-D652

Hair Laser Comb

- * LLLT laser, 650nm wavelength, revitalizes hair follicles
- * Enhances scalp health, strengthens hair, adds shine
- * 26 marble comb teeth, circular matrix for deep scalp care
- * 5-min session for full scalp maintenance
- * 1000mAh battery, 120-min use, Type-C charging
- * Sleek, glossy, gradient design, compact & travel-friendly
- * ROHS FCC CE
- * With the wisdom of nature and the power of technology, we provide all-round nourishing care for your beautiful hair

LS-M2066

Smart Electric Zinc Alloy Facial Beauty Machine

- * 5 Function modes
- * Red light + Current-(stinging sensation) boost collagen, anti wrinkle
- * Blue light is regulates water-oil balance
- * EMS micro current for lifting
- * Radio frequency stimulates-skin naturally produce collagen, tighten skin & reduce wrinkles





LS-T108

Hair removal device

- * 350,000 effective flashes
- * Sapphire freezing point
- * Comes standard with three filters and filter storage box
- * Filter replaceable technology
- * FDA / CFDA / FCC / CE / ROHS



T011C

Hair removal device

- * 350,000 effective flashes
- * ice cooling ensure painless hair removal
- * 5 Modes - Body, Face and Bikini
- * Hair removal and Skin rejuvenation.
- * Handheld and Easy to Use
- * Light Area 4.8 cm²
- * Wavelength 510-1200 nm
- * Energy 18 J
- * ROHS/CE/FCC



Light-out window
send the flash with heat for hair
removal treatment



Ice-cool head
make the cold compress
simultaneously

Quick ice

Ice care technology, synchro light / ice pack

Fully automatic

Fast and simple

Safer

Intelligent integrated lamp holder design

Smart touch

More convenient operation



5-SPEED ENERGY FREE ADJUSTMENT

Can be adjusted according to different parts

High-precision energy-gathering
Materials, stable energy output



LS-T130

Hair removal device

- * Ice cooling -Clinical-grade ice-touch technology
- * 5 levels of energy
- * LCD display screen
- * Wavelength 600-1200nm
- * Energy 16.5J
- * FDA / CFDA

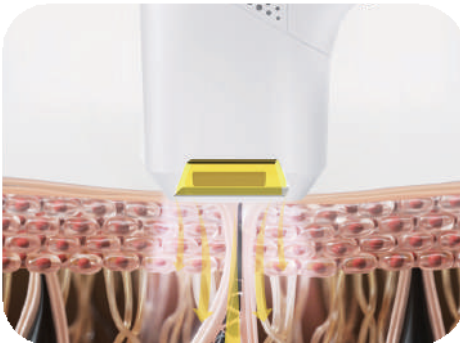


LS-T133

Hair removal device

990,000 effective flashes

- * HR/SR/HR+ three modes
- * Wavelength 530-1200nm
- * Energy 22J
- * 5.2cm² light output area
- * FDA
- *





LS-032

Ice IPL Hair Removal

- * 3 Modes – Body, Face and Bikini
- * Ice cooling ensure painless hair removal
- * High Energy Output 15J
- * Invisible screen and compact design
- * 600nm wavelength for precise and safe hair removal



LS-T106

Hair removal device

- * 350,000 effective flashes
- * 600-1200 nm redlight wavelength
- * 200g lightweight body
- * Energy 14.5J
- * 3 levels of energy



LS-T107

Hair removal device

- * 350,000 effective flashes
- * 3.7CM attachment 560-1200nm band filter
- * 3.0CM attachment 600-1200nm band filter
- * 2.0CM attachment 640-1200nm band filter
- * 3-level energy adjustment



LS-T121

Hair removal device

- * Sapphire freezing point
- * Automatic continuous flash/manual single flash
- * 3 levels of energy
- * Power cord anti-off design
- * FDA / CFDA / CE / FCC / ROHS

LS-T134

Hair removal device

- * 990,000 effective flashes
- * HR/SR/HR+ three modes
- * Wavelength 530-1200nm
- * Energy 22J
- * 5.6cm² light output area
- * FDA



13 Hair removal series



LS-T150

IPL Hair Removal Device

- * 99W Lamp Head – Hair removal, skin care, acne treatment
- * Auto Flash – Adjustable continuous mode
- * 9 Levels – Customizable intensity
- * Handheld & Easy to Use
- * Quartz Tube & LED Display



LS-T151

IPL Hair Removal Device

- * 99W Lamp Head – Hair removal, skin care, acne treatment
- * Auto Flash – Adjustable continuous mode
- * 9 Levels – Customizable intensity
- * Handheld & Easy to Use
- * Quartz Tube & LED Display



LS-T152

IPL Hair Removal Device

- * 99W Lamp Head – Hair removal, skin care, acne treatment
- * Auto Flash – Adjustable continuous mode
- * 9 Levels – Customizable intensity
- * Handheld & Easy to Use
- * Quartz Tube & LED Display



LS-T153

IPL Hair Removal Device

- * 99W Lamp Head – Hair removal, skin care, acne treatment
- * Auto Flash – Adjustable continuous mode
- * 9 Levels – Customizable intensity
- * Handheld & Easy to Use
- * Quartz Tube & LED Display



LS-T154

Sapphire Cooling IPL Hair Removal Device

- * Sapphire Cooling – Smooth & painless hair removal
- * Interchangeable Magnetic Heads – 3 sizes for precision treatment
- * Auto Flash – Adjustable continuous mode
- * 9 Levels – Customizable intensity
- * Handheld & Easy to Use
- * Quartz Tube & LCD Display



LS-T155

Standard IPL Hair Removal Device

- * 60W Lamp Head – Hair removal, skin care, acne treatment
- * Auto Flash – Adjustable continuous mode
- * 9 Levels – Customizable intensity
- * Handheld & Easy to Use
- * Quartz Tube & LED Display
- * Light Area: 4 cm²

LS-T156

IPL Hair Removal Device

- * 99W Lamp Head – Hair removal, skin care, acne treatment
- * Auto Flash – Adjustable continuous mode
- * 9 Levels – Customizable intensity
- * Handheld & Easy to Use
- * Quartz Tube & LED Display
- * Light Area: 4.2 cm²





LS-T157

Ice IPL Hair Removal Device

- * 60W Lamp Head – Hair removal, skin care, acne treatment
- * Auto Flash – Adjustable continuous mode
- * 9 Levels – Customizable intensity
- * Handheld & Easy to Use
- * Quartz Tube & LED Display
- * Switchable Modes – Hair removal, skin rejuvenation, acne treatment



LS-T158

IPL Hair Removal Device

- * Quartz Tube & IGBT Dual Flash Mode
- * IGBT Rapid Flash – 100 flashes per cycle
- * High Energy & Painless (23J)
- * Large Light Area for Faster Efficiency
- * Adjustable Auto Flash Mode
- * Tri-Color Light Indicator



LS-027

Hair removal

- * Light output area: 3cm^2
- * Energy: $18\text{J}(\text{max})$ **device**
- * Wavelength: 600nm
- * Light speed: $1.2\sim 2.8\text{s}$
- * Energy density: $2\sim 6\text{J}/\text{cm}^2$



LS-D802

Facial Body Beauty Equipment for Skin Care

- * 573 lamp beads
- * 7 luminous modes
- * Composite light is emitted by a combination of amber light(Red/Yellow/Blue)
- * Equipped with a stand and straps, it provides a versatile and comfortable treatment
- * Good experience for various areas, including the face, body, waist, and back



LS-805

Professional Light Therapy Mask

- * 240 LED therapy belt bead
- * Blue light wavelength 455-465nm
- * Infrared light wavelength 830-850nm
- * Red light wavelength 620-635nm



LS-831

Laser picosecond pen

- * 9 gears intensity
- * 4 frequencies
- * Wavelength 440-460nm
- * Doesn't hurt the skin
- * 2000mah battery capacity



LS-830

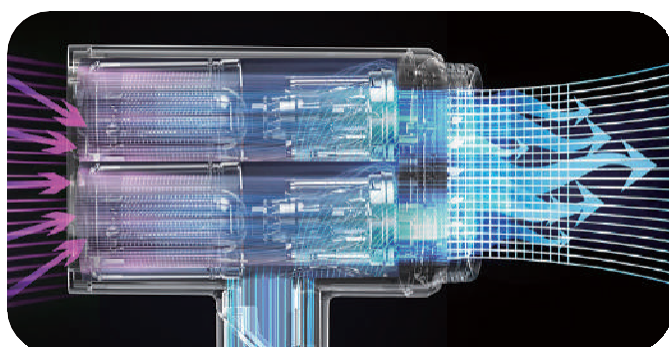
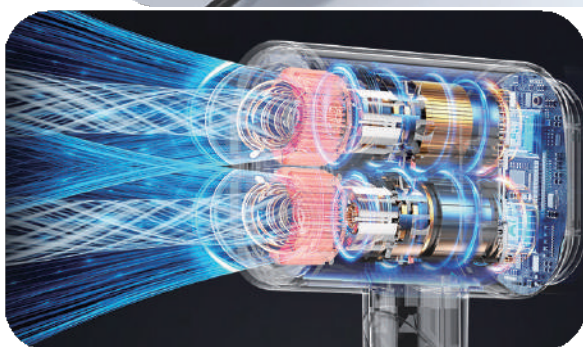
Laser picosecond pen

- * 9 gears intensity
- * 4 frequencies
- * Wavelength 440-460nm
- * Laser positioning
- * Doesn't hurt the skin

LS-077

High speed dual-motor hair dryer

- * 220,000r/m High speed motor
- * With two motors
- * 4 speeds heat setting
- * 4 speeds wind
- * Cool air function
- * Millions of negative ions
- * Memory function





LS-092A

High speed hair dryer

- * 110,000 RPM and equipped with high-quality aviation-grade aluminum alloy fan blades
- * Fast drying hair dryer can quickly dry hair in 2-8 minutes
- * 200 million negative ions in seconds
- * Quiet hair dryer adopts a noise reduction design, utilizing improved airflow technology and advanced sound insulation
- * The compact professional hair dryer comes with a 360° magnetic rotating diffuser and concentrator
- * Suitable for various hair types and styles (curly, straight, bob, layered)





LS-090A

High speed hair dryer

- * Aviation aluminum metal fuselage
- * Four levels of temperature and three levels of wind speed
- * Small air volume, constant temperature 50°C, hot compress for beauty treatment
- * One-click backflush self-cleaning mode
- * One-click cooling



LS-091

High speed hair dryer

- * 110,000 rpm high speed motor
- * Millions of negative ions
- * 7 levels of wind temperature
- * 3 levels of wind power
- * 50°C hot compress beauty treatment



LS-079

Smart high-speed hair dryer

- * Four-color ambient light design
- * 110000rpm high speed motor
- * 200 million high-concentration negative ions
- * Five modes, three wind speeds
- * Small air volume, constant temperature 50°C, hot compress for beauty treatment



LS-85

Plasma High Speed Hair Dryer

- * 110000 rpm high speed motor
- * Millions of negatives ions
- * 1600w high power
- * 2 levels of wind power



LS-H181

Multi-function high speed hair dryer

- * High concentration negative ions
- * Speeds up to 4.5m/s
- * Rated up to 1500w



LS-158

Intelligent High Speed Hair Dryer

- * Rated up to 1800w
- * 110000 rpm high speed motor
- * Millions of negatives ions



LS-H4501

Hair dryer splint

- * Rated up to 1200w
- * Negative ion hair care
- * 10 seconds rapid heating



LS-072

LS-072 Mini High-Speed Hair Dryer

- * 110,000 RPM high-speed motor for powerful airflow
- * 180 million negative ions for smooth, frizz-free hair
- * Ultra-lightweight at only 312g, reducing hand fatigue
- * Smart temperature control prevents hair damage
- * Compact and foldable design for easy portability
- * Multiple wind speeds and temperature settings
- * Type-C charging port, travel-friendly



LS-H1137

7 in One Multistyler Professional Ionic Hair Styling

- * Adjustable Temperature and Wind Speed
- * Select from 3 temperature settings and 3 wind speeds with hair dryer brush
- * Hair dryer brush is a high-speed motor with a rotation speed of up to 110,000 RPM and speed of up to 20M/s
- * The Multi-Function hot air brush combines curling, conditioning, straightening, blow drying and bang styling functions in one device, meeting all your hair care and styling needs
- * Using 3 negative million ion technology, this innovative tool effectively eliminates hair static, leaving hair smooth, hydrated, and protected
- * Enjoy peace of mind during styling with the electrical safety protection offered by the blow dryer brush hair dryer



LS-H1118

Cordless Hair Straightener

- * 3 temperature levels: 160-180-200
- * Rated power: 25W
- * Charger: 5V/2A
- * CE



LS-H1119

Cordless hair straightener

- * Interchangeable battery, 40 mins cordless use
- * Fast heating with ultra-thin film heater
- * 3 temps: 160°C, 190°C, 230°C (60s to 170°C)
- * Auto shut-off after 15 mins
- * Nano Silver & Tourmaline for smooth, glossy hair
- * Battery isolation mode for travel safety
- * Type-C charging, 1m cable included



LS-H1120

Cordless curling iron

- * Interchangeable battery, 40 mins cordless use
- * Fast heating with film heater
- * 3 temps: 160°C, 180°C, 210°C (60s to 130°C)
- * Auto shut-off after 15 mins
- * Nano Silver & Tourmaline for smooth, glossy curls
- * Battery isolation mode for travel safety
- * Type-C charging, 1m cable included



LS-H1138

Mini Hair Straightener

- * One-button control, LED indicator
- * 195-210°C fixed temp, PTC rapid heating
- * Auto shut-off after 20 min
- * 100-240V, 24W, heats to 100°C in 60s
- * Durable: 800h lifespan, 3ft drop-resistant
- * Compact: 190×21×29mm, 195g



LS-H1131

Wireless Negative Ion Splint

- * Three Temps: 320°F (160°C), 360°F (180°C), 400°F (200°C)
- * Battery Powered: 4500mAh lithium battery, 2.5h charge isolation
- * Auto shut-off, travel lock, and battery



LS-H1131A

Cordless Negative Ion Corn Clip

- * Three Temps: 320°F (160°C), 360°F (180°C), 400°F (200°C)
- * Battery Powered: 4500mAh lithium battery, 2.5h charge
- * Auto shut-off, travel lock, and battery isolation



LS-908

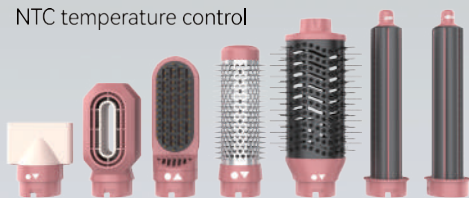
Ionic Function Hair Straightener Brush

- * Function: Negative ion function, flight mode function
- * 120-130-140-150-160-170-180-190-200-210-220-230°C
- * MCH heating
- * Charging time: 3 hours, usage time: 1 hour
- * Type-C charging

LS-H1136

Hair dryer brush

- * 3-speed wind speed and 3-speed temperature, one click cold air
- * Gear memory function
- * 110000RPM
- * 3 million negative ions
- * NTC temperature control



LS-910

High Speed Hair Straightener

- * 95000rpm motor for fast drying & styling
- * 3 million negative ions for smooth, frizz-free hair
- * Dual airflow for even heat
- * 2-in-1 drying & straightening
- * Smart temp control to prevent damage
- * Lightweight & ergonomic for comfort



LS-H1132

AI Sensing Light Hair Straightener

- * Touch screen switch
- * AI sensory lighting
- * Intelligent temperature control
- * Floating clamp
- * Equipped with silicone heat-resistant cover





LS-907

Salon Professional Hair Straightener with Steam

- * Adopts the latest steam technology
- * Time saving of 2-IN-1 design (straight & curling) and two way for using
- * Uniform and stable heater Plate, heats up in 1 minute
- * Conditioning Steam Vents, vapor water adds moisture and gloss to hair, making your hair more healthier and safer
- * Revel in a 20% increase in steam volume, while reducing hair damage by 80%, ensuring optimal moisture for a vibrant and healthy appearance



LESCOLTON®



LESCOLTON

LIVE FOR YOUR BEAUTY AND HEALTH